

PARTS LIST

<u>KEY</u>	<u>QTY</u>	<u>PART NO</u>	<u>DESCRIPTION</u>
1	1	008552	OIL SEAL
2	1	008734	BEARING FAFNIR B-542
3	6	010035	SHCS M6 X 18 LG
4	13	170304	SHCS M5 X 16 LG
5	1	014527	BEARING FAFNIR 7202W
6	1	020704	HANSEN PLUG
7	1	020728	O-RING SAE # 007
8	8	022789	O-RING SAE # 016
9	1	023096	O-RING SAE # 131
10	1	023097	BEARING FAFNIR 9101K
11	5	023446	O-RING SAE # 012
12	1	024631	FILTER ASSEMBLY
13	1	069177	O-RING SAE # 038
14	1	091354	O-RING SAE # 330
15	3	091624	O-RING SAE # 010
16	2	092747	O-RING SAE # 018
17	1	092772	O-RING SAE # 014
18	1	094295	O-RING SAE # 008
19	3	177721	SHSS M6 X 16 LG W / LG LCK
20	2	181261	DOWEL PIN 5 X 10 LG
21	4	259935	SHCS M3 X 12 LG
22	1	274451	DOWEL PIN 3 X 10 LG
23	3	276191	SHCS M4 X 10 LG
24	1	278994	SHCS M4 X 45 LG
25	1	NA	CE LABEL
26	1	286373	3 ICON SAFETY LABEL
27	2	292467	BHCS M5 X 8 LG
28	4	424555	BEARING GARLOCK MB 1012 DU
29	1	306335	RETAINING RING TRUARC N5000-37
30	1	423493	DOWEL PIN 5 X 16 LG
31	1	423582	CAMOZZI CARTRIDGE 6700-5
32	2	423889	BEARING GENERAL 6001-2RS
33	1	423890	TENSION MOTOR (20.25 : 1)
34	1	423893	BEARING SLEEVE
35	1	423894	SPIROID PINION 9.25:1
36	1	423895	FEEDWHEEL SHAFT
37	1	423896	BEARING CAP
38	1	423897	GEAR HOUSING (MACH)
39	1	423899	CLUTCH SPRING
40	1	423902	CLUTCH SPRING SEAT
41	1	423903	ROLLER CLUTCH INA HFL1426
42	1	423904	CLUTCH SLEEVE
43	1	423905	RELEASE RING
44	1	423906	RELEASE PIN
45	1	423907	RELEASE LEVER (MACH)
46	1	423908	SPRING LEE # LC-018B-7
47	1	423909	FEEDWHEEL
48	1	423910	TENSION GRIPPER (MACH)
49	1	423911	SPACER
50	1	423912	LOWER WELD GRIPPER (MACH)
51	1	423915	FRAME (MACH)
52	1	423916	BASE, MACHINED (STANDARD)
	1	424763	BASE, MACHINED (OPTIONAL)
53	1	424560	CUTTER HOLDER
54	1	423920	SUPPORT BAR
55	1	423921	HANDLE
56	1	423922	CUTTER PIN
57	1	423923	PISTON
58	1	423924	SPRING (O & G)

<u>KEY</u>	<u>QTY</u>	<u>PART NO</u>	<u>DESCRIPTION</u>
59	1	423925	VIBRATOR ARM
60	1	423927	OUTER LINK
61	1	423932	SPRING LEE # LC-036G-1
62	<u>1</u>	<u>423933</u>	<u>UPPER WELD GRIPPER</u>
63	1	423934	ECCENTRIC SHAFT
64	1	423936	CYLINDER HSG.
65	1	423937	PIVOT PIN
66	1	423938	SPACER
67	1	423940	BEARING TORRINGTON # M881
68	4	423942	RETAINING RING KLIPRING # 5304-43
69	1	423943	SPRING # LC-040C-6
70	1	423944	SPRING # LC-038D-17
71	1	423945	SPRING # LC-042D-17
72	1	423947	SEAL VALVE STEM
73	2	423950	INNER GUIDE 16 / 19
74	1	423958	SUPPORT SHAFT
75	1	423960	TENSION LEVER
76	1	423961	SEAL LEVER
77	1	423962	PISTON
78	1	424567	TENSION VALVE STEM
79	1	423964	SEAL VALVE SLEEVE
80	2	423965	LEVER PIN
81	1	423966	TUBE
82	1	423967	DOWEL PIN 8 X 32 LG
83	3	423968	SHSS M5 X 6 LG CUP POINT
84	2	423969	SHSS M5 X 10 LG CUP POINT
85	4	423970	SHCS M4 X 5 LG
86	1	423978	GUIDE PLATE (VT-16)
	1	423979	GUIDE PLATE (VT-19)
87	1	423980	WELD MOTOR ASSEMBLY
88	2	423981	FLOW CONTROL CAMOZZI SCU-602-M5
89	1	423982	PILOT VALVE COVER
90	1	423987	NAMEPLATE (VT-16)
	1	423988	NAMEPLATE (VT-19)
91	1	423994	BEARING INA NK 16/16
92	1	423995	O-RING SAE # 124
93	2	086190	RETAINING RING KLIPRING # 5304-37
94	2	423997	BEARING INA HK0808
95	1	423999	DOWEL PIN 5 X 22 LG
96	3	424375	RETAINING RING 19 X 1.0 DIN 472
97	1	424376	CHECK VALVE ASSEMBLY
98	1	424380	ADJUSTMENT SCREW
99	1	424381	SPIROID GEAR 9.25:1
100	1	424566	TENSION VALVE SLEEVE
101	<u>1</u>	<u>424383</u>	<u>HANGER ASSEM. HORIZ/VERT</u>
102	2	424392	RETAINING RING CIRCLIP 4 X 0.7
103	1	424490	INDICATOR
104	1	424492	COVER ASSEMBLY
105	1	424493	SPRING # LC-040E-13
106	<u>1</u>	<u>424550</u>	<u>PILOT VALVE ASSEMBLY</u>
107	2	424552	CAP
108	1	423953	WARNING LABEL
109	1	423956	OUTER GUIDE (VT-16)
	1	423957	OUTER GUIDE (VT-19)
110	<u>1</u>	<u>424557</u>	<u>CUTTER INSERT</u>
112	1	036414	1/4, 90° STREET ELBOW
113	2	004164	O-RING, SAE #011
114	2	010031	SHCS, M5 x 25 LG
117	1	424762	O-RING, SAE #106
118	1	425631	SPRING / SEAT ASSEMBLY
119	1	425632	ROLLER CLUTCH / SLEEVE ASSEMBLY

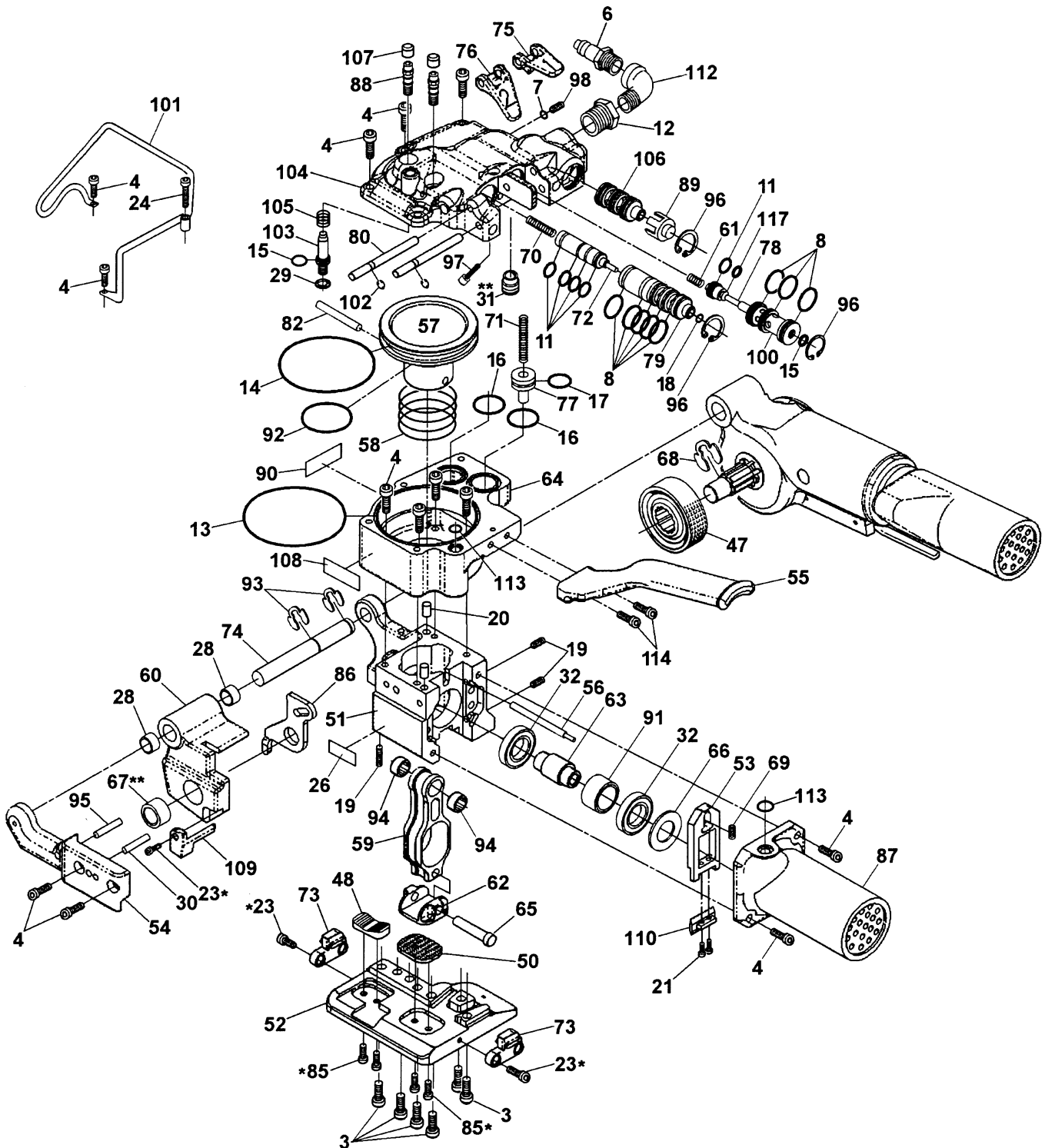
- When ordering parts please indicate tool model, part number and description.
- Recommended spare parts are underlined and should be stocked.
- Common hardware parts can be obtained at any local hardware supply.

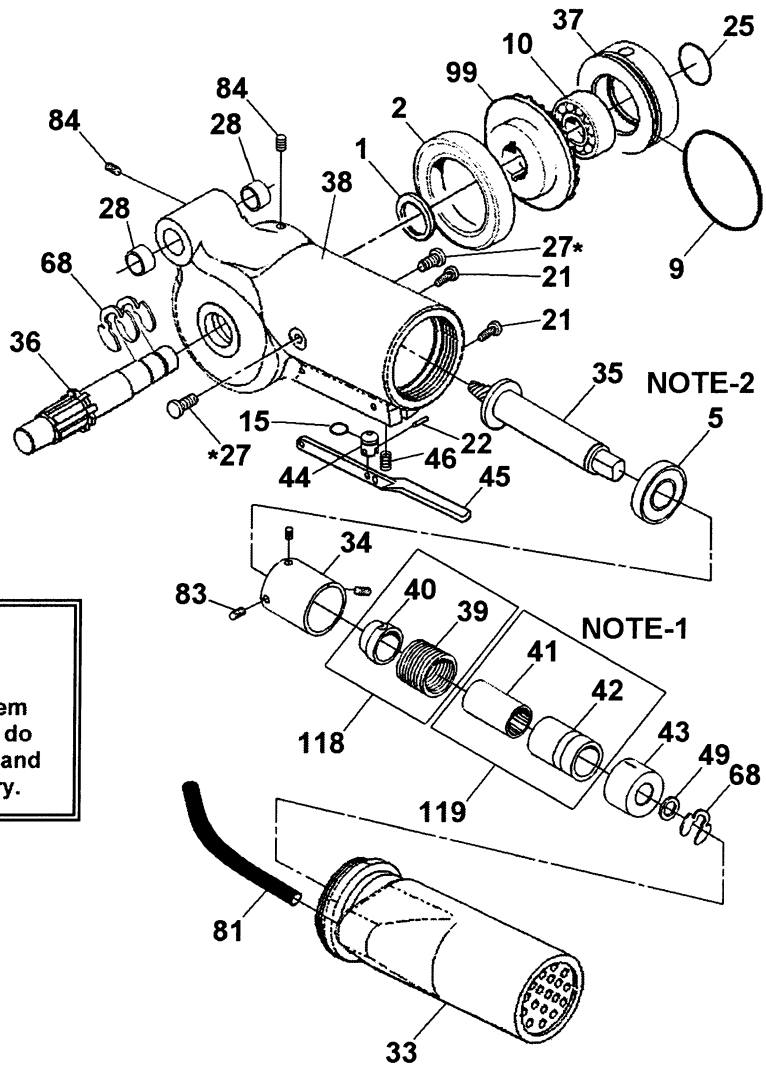
CAUTION

Only use valve cartridge (Key 106), Signode Part No. 424550. Cartridges can be identified by the OEM code "D2073" marked on the back surface of the part.

⚠ WARNING

NEVER remove the air valves (Key 79, 100 & 106) when air is connected to the tool. Removing an valve with air to the tool will cause the valve to violently release from the tool.





⚠ WARNING
 Inspect all parts daily and replace them if they are worn or broken. Failure to do this can affect a product's operation and could result in serious personal injury.

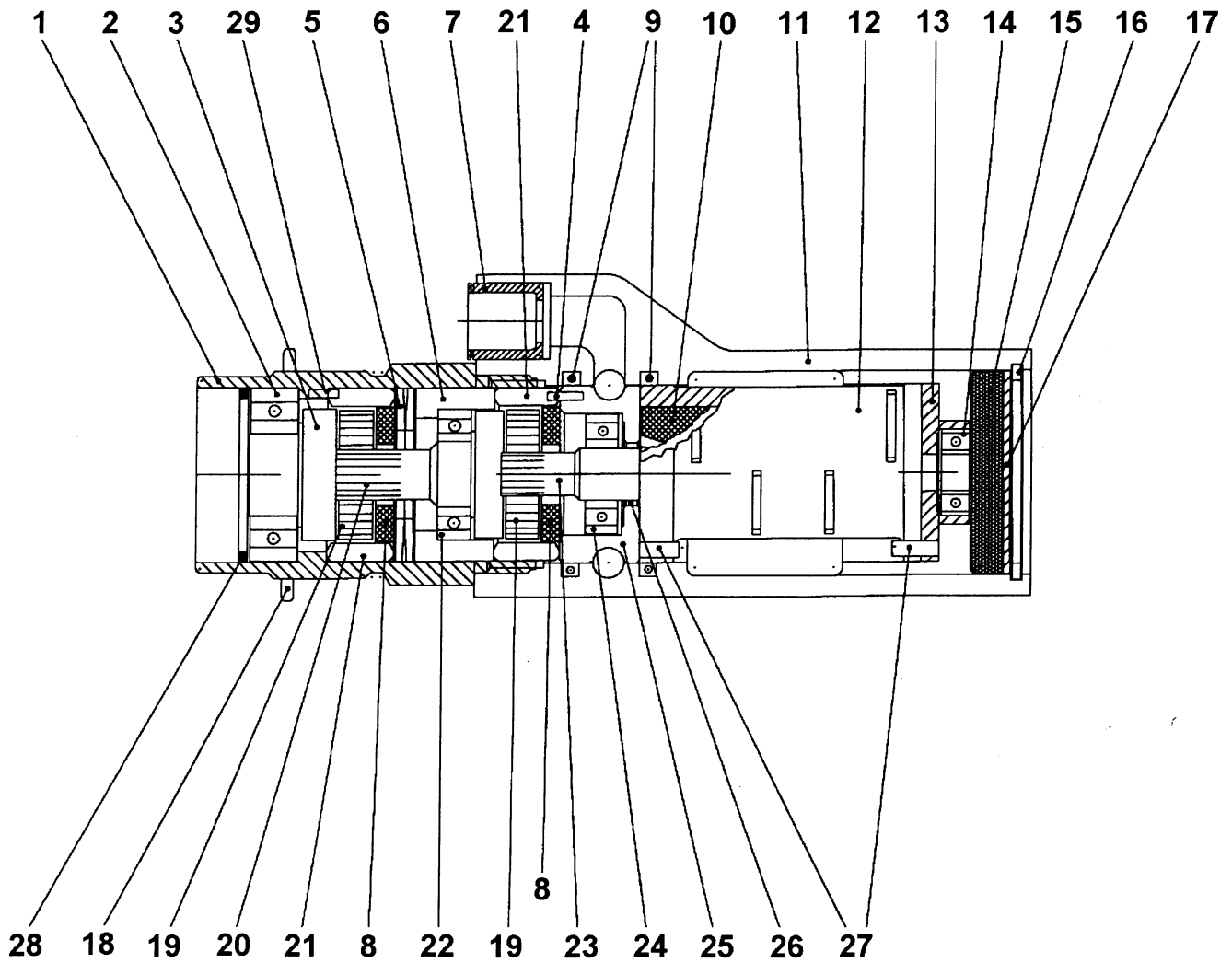
* Use Loctite #242 or equivalent.
 ** Use Loctite #609 or equivalent.

NOTES:

1. Install bearing (Key 41) into clutch sleeve (Key 42) with lettered end of bearing on end opposite of groove in clutch sleeve. Non-lettered end of bearing to installed flush with the grooved end of clutch sleeve.
2. Install bearing (Key 5) on to spiroid pinion (Key 35) with lettered end of bearing facing away from geared end of spiroid pinion.
3. For optimum tool performance, fill gear housing (Key 38) one-third full of Red Mobilith SHC 007 Grease (Signode Part No. 425239).
4. Key numbers 39 (Clutch Spring) and 40 (Spring Seat) can be order together as Signode Part Number 425631 (Key 118).
5. Key numbers 41 (Roller Clutch) and 42 (Clutch Sleeve) can be order together as Signode Part Number 425632 (Key 119).

PARTS LIST, TENSION MOTOR 423890

<u>KEY</u>	<u>QTY</u>	<u>PART NO</u>	<u>DESCRIPTION</u>
1	1	424153	MOTOR GEAR HOUSING
2	1	023547	BALL BEARING
3	1	424159	IDLER CARRIER
4	1	090079	LOCK PIN
5	2	014541	BELLEVILLE SPRING
6	1	424157	SPACER
7	1	423582	CAMMOZZI 6700-8 CARTRIDGE
8	2	423151	WASHER
9	2	424172	O-RING
10	5	422818	VANE
11	1	423986	MOTOR HOUSING
12	1	422815	CYLINDER
13	1	424154	BACK END PLATE
14	1	424161	BALL BEARING
15	1	424167	MUFFLER INSERT
16	1	424162	RETAINING RING
17	1	424165	MUFFLER PLATE
18	1	424166	LOCKING NUT
19	6	422869	IDLER
20	1	423892	IDLER CARRIER
21	2	422870	RING GEAR
22	1	306396	BALL BEARING
23	1	423891	ROTOR
24	1	023481	BALL BEARING
25	1	425462	FRONT END PLATE
26	1	024602	SPACER
27	2	424164	SPRING PIN
28	1	080315	RETAINING RING
29	1	090065	LOCK PIN

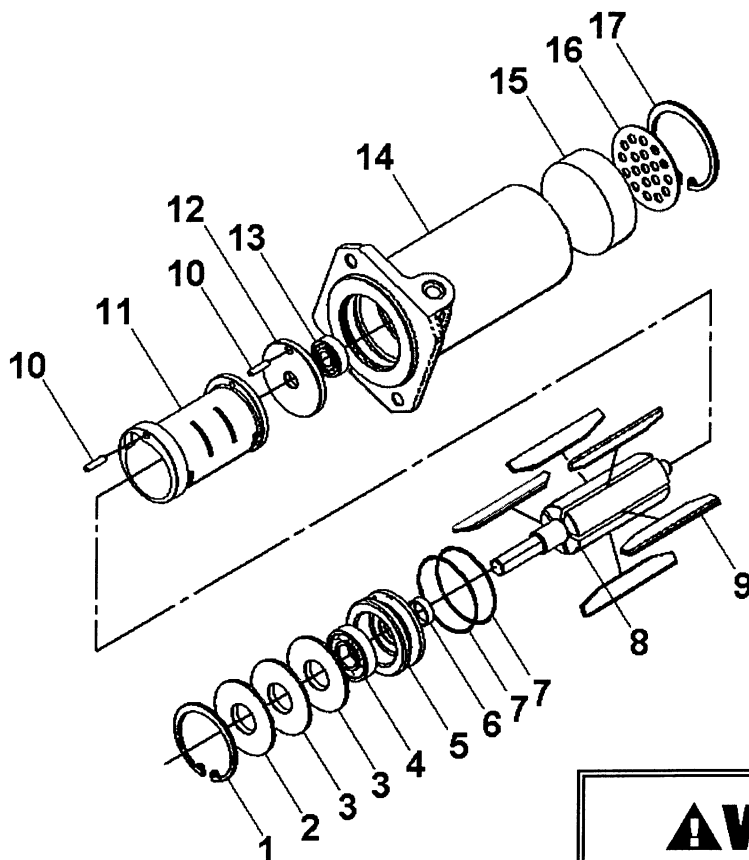


⚠ WARNING

Inspect all parts daily and replace them if they are worn or broken. Failure to do this can affect a product's operation and could result in serious personal injury.

PARTS LIST, WELD MOTOR 423980

KEY	QTY	PART NO	DESCRIPTION
1	1	080315	RETAINING RING
2	1	424181	FLAT WASHER
3	2	014541	BELLEVILLE WASHER
4	4	090118	BALL BEARING
5	1	423973	FRONT END PLATE
6	1	024602	SPACER
7	2	424172	O-RING
8	1	424174	ROTOR
9	5	422818	VANE
10	2	424164	LOCK PIN
11	1	422815	CYLINDER
12	1	424154	BACK END PLATE
13	1	424161	BALL BEARING
14	1	423919	MOTOR HOUSING
15	1	424759	MUFFLER INSERT
16	1	424165	MUFFLER PLATE
17	1	424162	RETAINING RING



WARNING

Inspect all parts daily and replace them if they are worn or broken. Failure to do this can affect a product's operation and could result in serious personal injury.