

PARTS LIST, TOOL - MODEL PN2-114

KEY	QTY.	PART #	DESCRIPTION
1	1	<u>423518</u>	Flange bearing
2	1	<u>423537</u>	Nameplate
3	1	<u>423516</u>	Pivot pin, $\phi 10\text{mm} \times 60\text{mm}$
4	1	<u>267596</u>	Warning plate
5	4	005464	Lock washer
6	2	423549	SHCS, M6 x 18
7	1	<u>423532</u>	Handle
8	2	423790	SHCS, M6 x 25
9	1	162391	Pin, $\phi 5\text{mm} \times 24\text{mm}$
10	1	423791	SHSS, M6 x 25 (flat point)
14	1	<u>423548</u>	Foot spring
16	1	<u>423514</u>	Breaker foot
17	1	<u>423513</u>	Breaker nose
18	1	<u>252262</u>	Nose pin, $\phi 8\text{mm} \times 36\text{mm}$
19	1	423546	Nose spring
20	1	<u>423398</u>	Feed wheel
21	1	<u>423521</u>	Bushing
22	1	423505	Side plate
26	1	<u>423517</u>	Roller
28	1	<u>423524</u>	Roller pin, $\phi 10\text{mm} \times 50\text{mm}$

WARNING

Inspect all parts daily and replace them if they are worn or broken. Failure to do this can affect a product's operation and could result in serious personal injury.

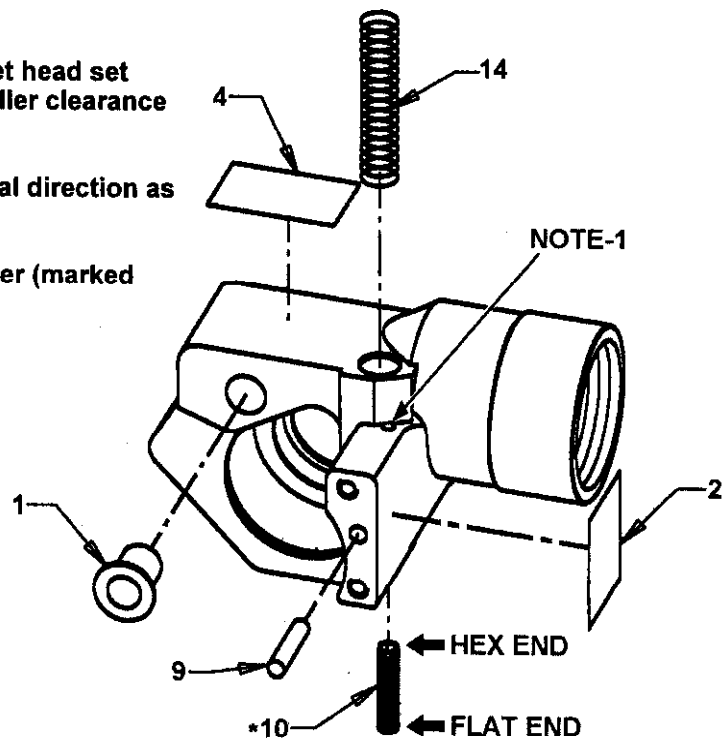
- When ordering parts please show tool model, part number and description.
- Recommended spare parts are underlined and should be stocked.
- Common hardware parts can be obtained at any local hardware supply.

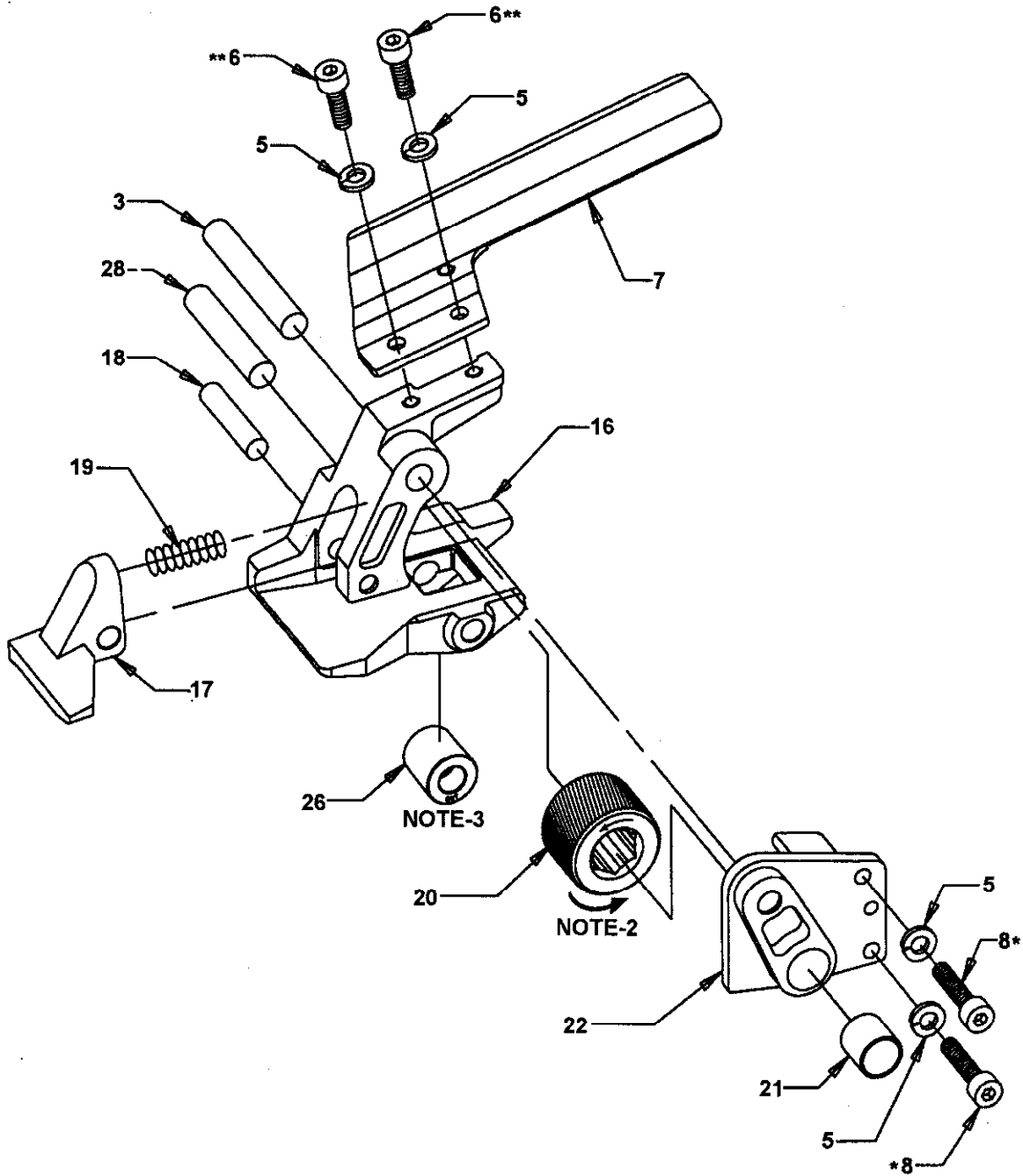
* Apply one drop of Loctite #242 (Blue) sealant to cleaned parts. Allow 12 hours to set if possible. Do not apply to small screws or close to moving parts as liquid spreads easily.

** Apply one drop of Loctite #271 (Red) sealant to cleaned parts. Allow 12 hours to set if possible. Do not apply to small screws or close to moving parts as liquid spreads easily.

NOTES:

1. Allen wrench access hole to socket head set screw (Key 10) for feedwheel to roller clearance adjustment.
2. Install feedwheel in noted rotational direction as shown by arrows.
3. Install roller with the larger diameter (marked OUT) facing outwards as shown.

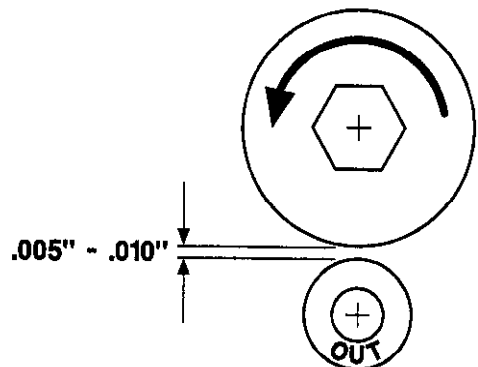




FEEDWHEEL TO ROLLER CLEARANCE:

The feedwheel (Key 20) to roller (Key 26) clearance is set by turning the set screw (Key 10) until there is a .005" - .010" clearance to be established between the two parts.

NOTE: The feedwheel and roller should not come together.



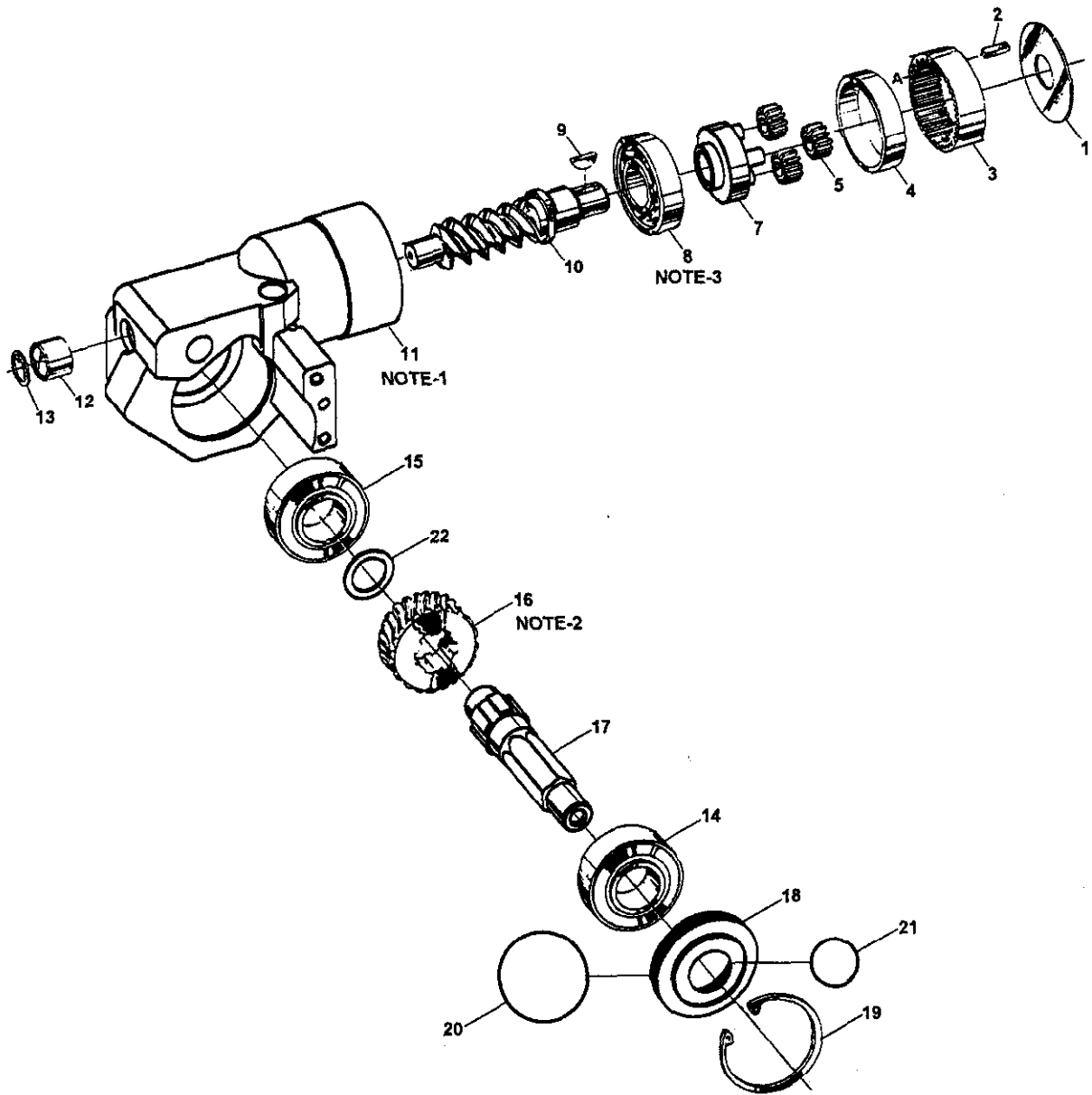
PARTS LIST, GEAR HOUSING ASSEMBLY P-423520

<u>KEY</u>	<u>QTY.</u>	<u>PART #</u>	<u>DESCRIPTION</u>
1	1	008781	Thrust washer
2	1	008872	Ring gear key
3	1	008871	Ring gear
4	1	008769	Spacer
5	3	<u>008766</u>	<u>Idler gear</u>
7	1	306389	Idler gear plate assembly
8	1	008756	Bearing, Fafnir 7203
9	1	008774	Key
10	1	423530	Worm
11	1	423511	Gear housing
12	1	008751	Needle bearing, Torr M781
13	1	008752	Truarc, N5000-62
14	1	423515	Bearing, Fafnir B539DD
15	1	024038	Bearing, Fafnir KP10A
16	1	<u>423529</u>	<u>Worm - gear</u>
17	1	423501	Feedwheel shaft
18	1	423509	Cover
19	1	250731	Truarc ring, N5000-185
20	1	256755	O-Ring, SAE 30
21	1	423531	O-Ring, SAE 18
22	1	423533	Thrust washer

- When ordering parts please show tool model, part number and description.
- Recommended spare parts are underlined and should be stocked.
- Common hardware parts can be obtained at any local hardware supply.

▲WARNING

Inspect all parts daily and replace them if they are worn or broken. Failure to do this can affect a product's operation and could result in serious personal injury.



NOTES:

1. Pack the gear housing (11) about 1/3 full with Non-Fluid Oil #K55 or equivalent.
2. When assembling the worm gear, the side stamped 'T' must face towards the back of the housing.
3. Bearing must be installed with wide shoulder away from worm.

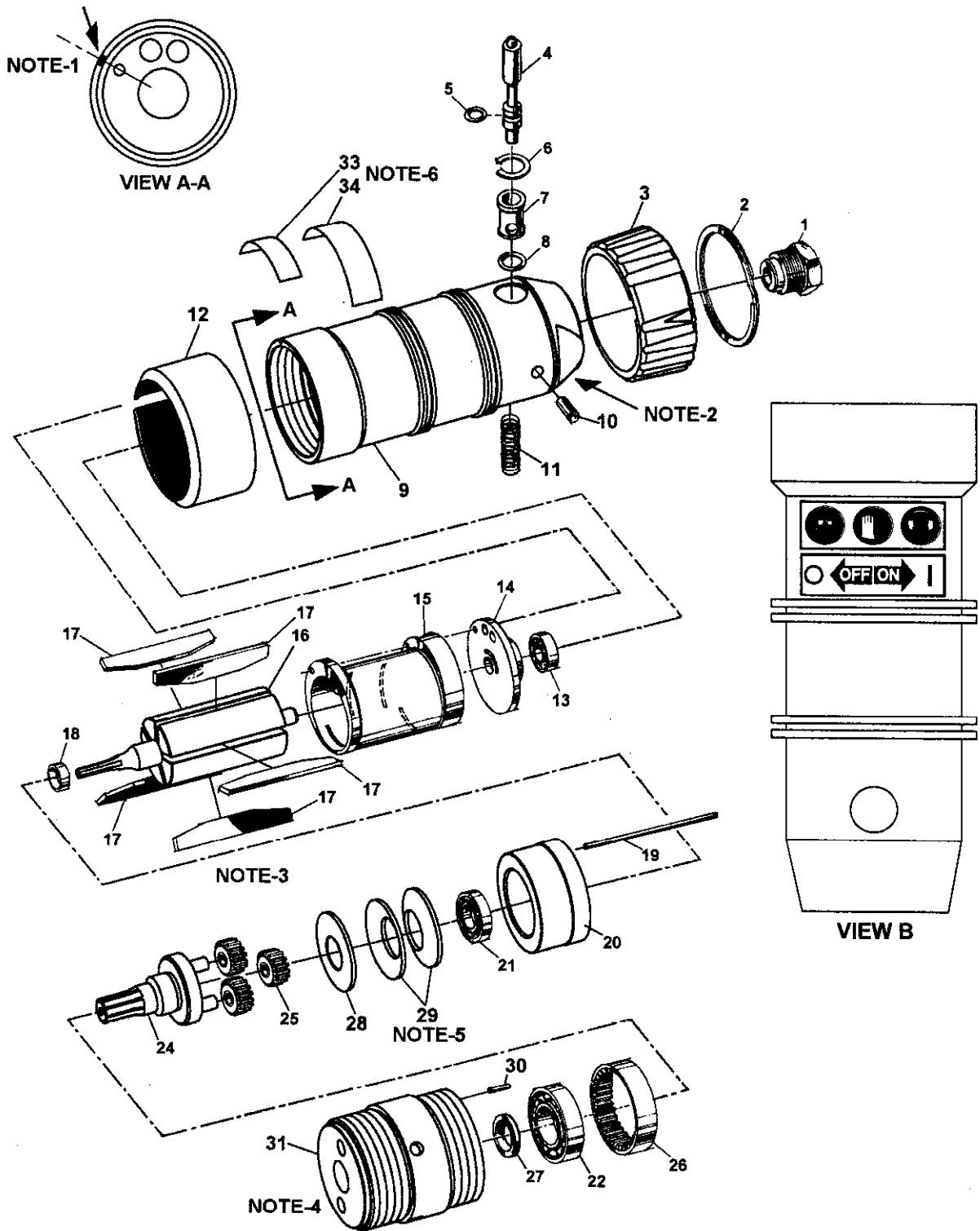
PARTS LIST, AIR MOTOR, 100L15, PART NO. 423510

<u>KEY</u>	<u>QTY.</u>	<u>PART NO.</u>	<u>DESCRIPTION</u>
1	1	024631	Filter assembly
2	1	023557	Retainer, Spirolox, #RS-181
3	1	024676	Valve collar
4	1	<u>024662</u>	<u>Valve stem</u>
5	1	<u>023559</u>	<u>O-ring</u>
6	1	023549	Retainer
7	1	024663	Valve sleeve
8	1	<u>004164</u>	<u>O-ring</u>
9	1	423508	Motor housing
10	1	023372	Roll pin, 3/16 x 3/8
11	1	024661	Valve spring
12	1	423534	Deflector assembly
13	1	<u>024633</u>	<u>Bearing, Fafnir, #ASIK7-SRI #2</u>
14	1	<u>024653</u>	<u>Back end plate</u>
15	1	024652	Cylinder
16	1	<u>423423</u>	<u>Rotor</u>
17	5	<u>024651</u>	<u>Vane</u>
18	1	024602	Spacer
19	1	023510	Align pin
20	1	<u>423794</u>	<u>Front end plate</u>
21	1	<u>023481</u>	<u>Ball bearing</u>
22	1	023547	Ball bearing
24	1	423403	Idler carrier assembly
25	3	<u>423060</u>	<u>Idler</u>
26	1	423798	Ring gear
27	1	023558	Seal
28	1	423404	Spacer
29	2	423793	Bevel spring washer
30	1	306612	Pin
31	1	423795	Gear housing
33	1	286373	3 symbol safety sign
34	1	280537	On-Off label

- When ordering parts please indicate air motor model, part number and description.
- Recommended spare parts are underlined and should be stocked.
- Common hardware parts can be obtained at any local hardware supply.

NOTES:

1. Align marks on motor housing as indicated in "View A-A".
2. Location of air motor number (underside).
3. Idler gears (25) are to be lubricated with Non-Fluid Oil #K55 or equivalent. Vanes (17) must soak in air line oil overnight before assembling air motor.
4. If the rear motor housing (9) becomes loose, it must be retightened while the motor is running at 20 to 30 psig (1.6 to 2.0 Bar) air pressure. This will ensure proper alignment and rotor freedom.
5. Spring washers should be assembled back to back with cup shape facing outwards) (.
6. Apply labels (Key 33 & 34) to motor housing oriented as shown in "View B".



WARNING

Inspect all parts daily and replace them if they are worn or broken. Failure to do this can affect a product's operation and could result in serious personal injury.