

PARTS LIST

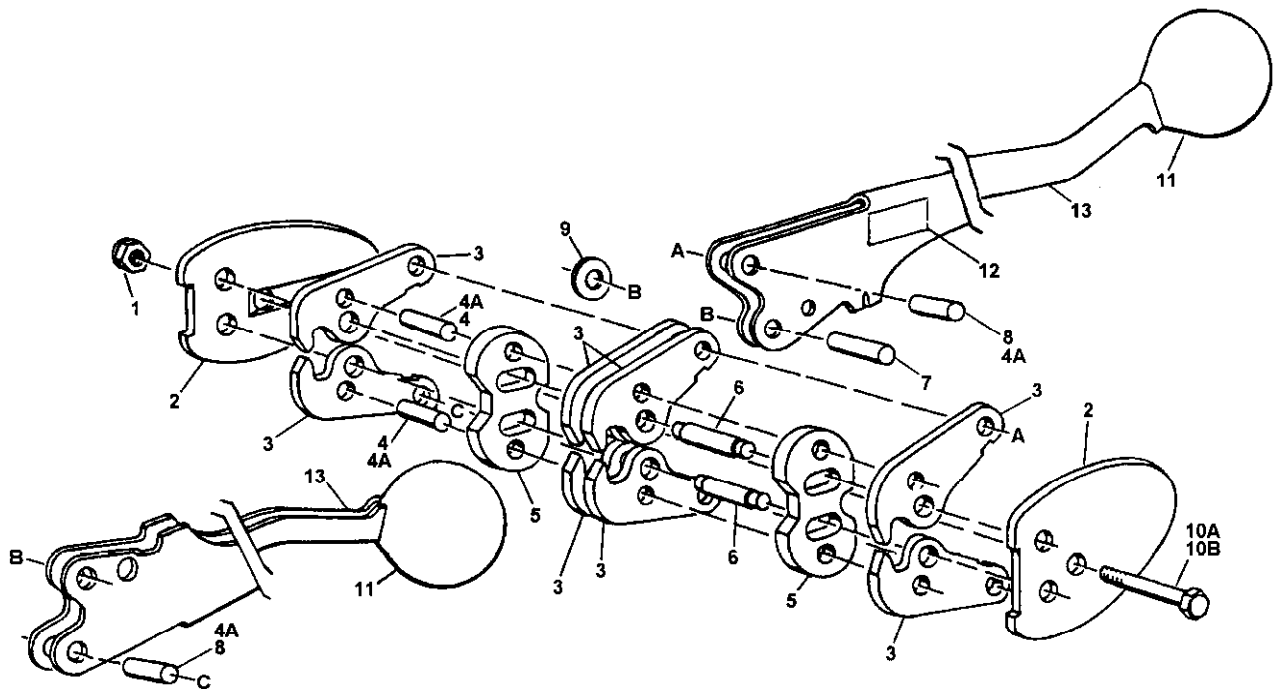
KEY	QTY.	PART NO. C-3820	PART NO. C-1223	PART NO. C-5823	PART NO. C-3423	DESCRIPTION
1	1	<u>004526</u>	<u>004526</u>	<u>004526</u>	<u>004526</u>	Flexloc nut, thin 1/4-28
2	2	<u>008601</u>	<u>008609</u>	<u>008618</u>	<u>008623</u>	Side plate
*3	8	<u>008603</u>	<u>008608</u>	<u>008616</u>	<u>008616</u>	Jaw
4	2	<u>008606</u>	<u>008606</u>	--	--	Notcher pin
4A	4	--	--	<u>008612</u>	<u>008612</u>	Notcher pin
5	2	<u>008602</u>	<u>008676</u>	<u>008617</u>	<u>008632</u>	Notcher
6	2	<u>008604</u>	<u>008604</u>	<u>008614</u>	<u>008614</u>	Jaw pin
7	1	<u>008626</u>	<u>008626</u>	<u>008611</u>	<u>008611</u>	Guide pin
8	2	<u>004874</u>	<u>004874</u>	--	--	Toggle pin
9	1	<u>007492</u>	<u>007492</u>	<u>007492</u>	<u>007492</u>	Spacer washer, 1/4 std. SAE
10	1	<u>003943</u>	<u>003943</u>	--	--	Hex head cap screw, 1/4-28 x 1 1/4
	1	--	--	<u>003726</u>	<u>003726</u>	Hex head cap screw, 1/4-28 x 1 3/8
11	2	<u>008648</u>	<u>008648</u>	<u>008648</u>	<u>008648</u>	Knob, (press-on)
12	1	<u>003133</u>	<u>003133</u>	<u>003133</u>	<u>003133</u>	Caution plate
13	2	<u>008660</u>	<u>008660</u>	<u>008660</u>	<u>008660</u>	Sealer handle assembly

NOTES:

1. When ordering parts, please show tool model, part number and name.
2. All recommended spare parts are underlined and should be stocked.
3. Standard hardware parts may be obtained from local hardware suppliers.

WARNING

Inspect all parts daily and replace them if they are worn or broken. Failure to do this can affect a product's operation and could result in serious personal injury.



MAINTENANCE

1. Inspect tool daily for worn or broken parts and replace if necessary.
2. Clean tool and apply light machine oil to all moving parts - weekly.