

Is difficult to adjust the work parameters, don't remain constant or don't set changing on keyboard / Il est difficile de modifier les paramètres de travail, ils ne sont pas constants et les modifications ne sont pas enregistrées sur le clavier / Dificultad para modificar las configuraciones de trabajo; los parámetros no permanecen constantes o al modificarlos no varían las configuraciones

E Probably there are keyboard or electronic card problems / try to replace it.

F Problèmes dus au clavier de programmation ou à la carte électronique, remplacer

S Problemas con el teclado de programación o con la tarjeta electrónica

Progressive abatement of battery duty cycles / Diminution progressive des cycles de service avec la même batterie / Reducción sensible de los ciclos de servicio con la misma batería

E Check the battery charge, try to recharge and check if the battery charger is running well.

May be that the battery is going to recharge limit life

May be that the internal cells are damaged or worn out due to floor falls or strong impacts

Try to have other trial with different battery

F Essayer de recharger la batterie, contrôler le fonctionnement du chargeur de batterie

Nombre limite des cycles de charge sur le point d'être atteint (changer d'ici peu)

Les cellules internes peuvent avoir été endommagées après une chute ou un choc violent

Faire des essais avec une autre batterie sur la même machine

S Intente recargar la batería, controle el funcionamiento del cargador

Se está alcanzando el límite de ciclos de carga (próxima sustitución)

Probable daño de las celdas internas tras caídas o golpes violentos

Efectuar pruebas con otras baterías en la misma máquina

The charger will not start to recharge the battery / Impossible de recharger la batterie avec le chargeur de batterie / No es posible recargar la batería en el cargador

E The battery is damaged. The battery tension is lower than 10V – check by electric tester

Check if the charger is still running

F La batterie est endommagée. La batterie se trouve en dessous de la limite de charge (10V) contrôler avec un testeur. Contrôler si le chargeur de batterie fonctionne

E La batería está dañada. La batería alcanzó un valor por debajo del límite de descarga (10V); controle con el multímetro. Revise el funcionamiento del cargador

9) SPARE PARTS LIST / LISTE DES PIECES / LISTA DE RECAMBIO

Ed.06-17

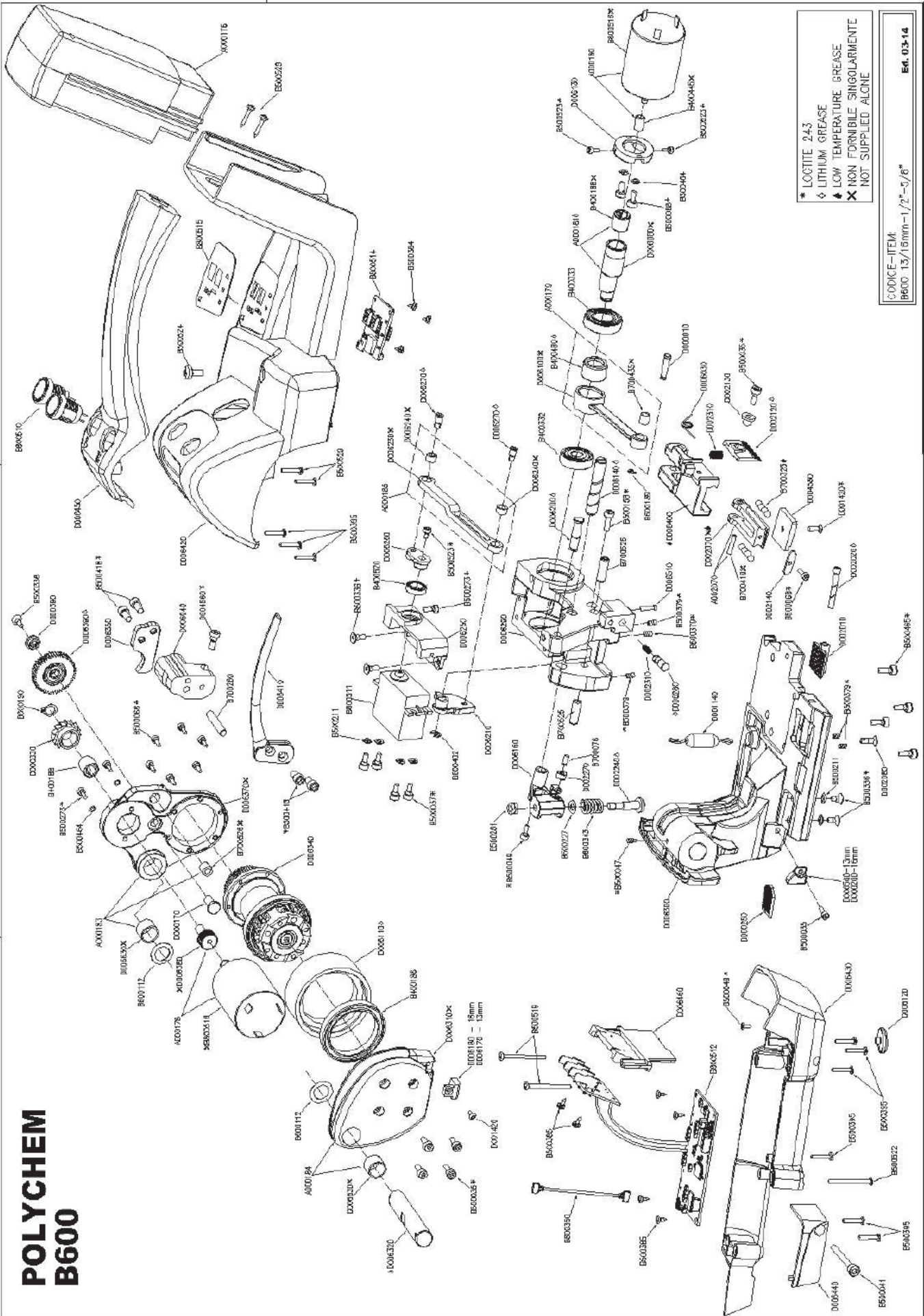
POLYCHEM PART #	ITEM	DESCRIPTION	QTY		
190086	A002070	WELDING FOOT SUPPORT ASSEMBLED	1		
B600BAT	A000176	2.0 Ah Li-Po BATTERY	1	§	*
190201	A000178	TENSION MOTOR ASSEMBLED	1		*
190212	A000179	CONNECTING ROD ASSEMBLED	1		
190202	A000180	WELDING MOTOR ASSEMBLED	1		*
190213	A000181	EXCENTRIC SHAFT ASSEMBLED	1		
190214	A000183	TENSION MOTOR FLANGE ASSEMBLED	1		
190215	A000184	SUPPORT FEEDWHEEL ASSEMBLED	1		
190216	A000185	SERVO/CAM CONNECTING LEVER	1		
190026	B400186	BEARING 61808-ZZ C3	1		
190028	B400188	BEARING INA HF0812	1		
190029	B400332	BEARING ERI 61902-2BRS	1		
190030	B400333	BEARING ERI 609-2BRS	1		
190217	B400520	SERVO BEARING H61700-2Z	1		
190218	B400480	ROLL BEARING HK1212	1		
190031	B500035	CYLINDER SCREW M4x10 UNI5931	6		*
190196	B500037	CYLINDER SCREW M4x8 UNI5931	4		
189155	B500041	SCREW M4X30 UNI5931	1		
189698	B500047	SCREW M5x8 UNI 5925	1		
190219	B500049	SCREW M4x6 DIN7984	2		
190161	B500068	CYLINDER SCREW M3x8 UNI5931	9		*
190037	B500158	CYLINDER SCREW M4x12 UNI5931	1		
190147	B500211	WASHER	6		
190040	B500273	CYLINDER SCREW M3X10 UNI5931	3		
190042	B500281	NUT M6 DIN985	1		

POLYCHEM PART #	ITEM	DESCRIPTION	QTY		
190043	B500336	SCREW M4x10 UNI5933	5		
190044	B500379	SCREW M4x5 UNI5923	5		*
190045	B500384	SCREW 2.9X4.5 UNI 6954	3		
190046	B500385	SCREW 2.9X6.5 UNI 6954	6		
190047	B500395	SCREW BOSSARD BN13577 3.5x16 KA35	9		*
190033	B500418	SCREW UNC10-24X3/8	4		
190220	B500464	SCHNORR WASHER R150 DIAM.3	4		
190221	B500465	CYLINDER SCREW M5x14 UNI5931	4		*
X	B500519	SCREW BOSSARD BN13577 3x30	2		
190223	B500522	SCREW BOSSARD BN13577 3.5x35 KA35	1		*
190224	B500523	CYLINDER SCREW M3x6 UNI5931	3		
190225	B500524	SCREW M5x8 ISO7380	1		
190226	B500529	SCREW 3x20 DIN 7505 A	4		
190050	B600112	WASHER PS12X18X0.5 DIN988	2		
190053	B600189	CIRCLIP D3.2	1		
190054	B600190	CIRCLIP D8 TYPE E DIN 471	1		
190134	B600227	CUP WASHER CB12.5X6.2X0.7 D.2093	1		
190057	B600343	SPRING G13-025 ISO10243	1		
190227	B600402	CIRCLIP RA4 UNI7434 R150	1		
190062	B700076	PIN Ø4x12	1		
190228	B700260	SPINA CIL. Ø5x30	1		
190064	B700325	SPHERE DIAM. 5mm	8		*
190229	B700525	PIN 6X20 UNI6364B	2		
190230	B800510	TENSION/WELDING BUTTON	2		*
190231	B800511	SERVOMOTOR	1		
190203	B800512	POWER CARD	1		*
190204	B800514	ELECTRONIC SIGNALS CARD	1		*
190205	B800515	KEYBOARD	1		*
190232	B800530	POWER CARD-KEYBOARD CONNECTION CABLE	1		
190070	D000010	CONNECTING ROD PIN	1		
190071	D000170	GEAR SHAFT	1		
190072	D000200	16mm FRONT STRAP GUIDE	1		
190073	D000250	STRAPLOCKER	1		
190074	D000330	FREEWHEEL SUPPORT	1		
190076	D000390	WASHER	1		
190079	D001140	OPENING LEVER SPRING	1		
190122	D001420	SPECIAL SCREW WELDING PLATE	2		
190080	D002010	WELDING FOOT	1	§	*
190081	D002020	WELDING FOOT PIN	1		
190087	D002080	PIN	1		
190090	D002120	CUTTER	1		
190091	D002130	CUTTER GUIDE	1		
190092	D002140	COVER	1		
190098	D002240	SPRING PIN	1		
190101	D002270	ROLLER	1		
190105	D002310	STRAPGUIDE AND BLADE SPRING	2		
190145	D004560	SPECIAL SCREW	1		
190159	D004580	WELDING PLATE	1	§	*
190206	D006030	SPRING	1		*
190233	D006040	LEVER/HOOK SUPPORT	1		
190207	D006110	FEEDWHEEL	1	§	*
190208	D006120	ANTIWEAR PAD	1	§	*
190234	D006130	WELDING MOTOR FLANGE	1		
190235	D006140	SPRING PIN	1		

POLYCHEM PART #	ITEM	DESCRIPTION	QTY		
190236	D006160	SPRING SUPPORT	1		
190210	D006170	LATERAL STRAP GUIDE 13mm	1		
190237	D006180	LATERAL STRAP GUIDE 16mm	1		
190238	D006200	PIN CAM	1		
190239	D006210	CAM	1		
190240	D006250	SERVO SUPPORT	1		
190241	D006260	SERVO LEVER	1		
190242	D006270	PIN	2		
190243	D006280	REAR STRAPGUIDE	1		
190244	D006290	WELDING FRAME	1		
190245	D006300	MAIN FRAME	1		
190246	D006320	CENTRAL PIN	1		
190247	D006340	GEARBOX	1		
190248	D006350	HOOK	1		
190249	D006390	FREE GEAR	1		
190250	D006400	WELDING FOOT SUPPORT	1		
190251	D006410	OPENING LEVER	1		
190252	D006420	TOP PLASTIC TOOL COVER	1		
190253	D006430	BOTTOM PLASTIC TOOL COVER	1		
190254	D006440	BLADE COVER	1		
190255	D006450	HANDLE	1		
190256	D006460	BATTERY CARD PLASTIC FRAME	1		
190209	D006510	REAR STRAP GUIDE PIN	1		*
190257	D006560	13mm FRONT STRAP GUIDE	1		

	§	WEARING PART
	*	PART THAT SHOUD BE STOCKED

POLYCHEM B600



- * LOCTITE 243
- ◊ LITHIUM GREASE
- ▲ LOW TEMPERATURE GREASE
- ✕ NON FORMIBILE SINGOLARMENTE
NOT SUPPLIED ALONE

CODICE-ITEM
B600-113/16mm-1/2"-5/8"

Ed. 03-14