

9) SPARE PARTS LIST / LISTE DES PIECES /LISTA DE RECAMBIO

Ed. 06-17

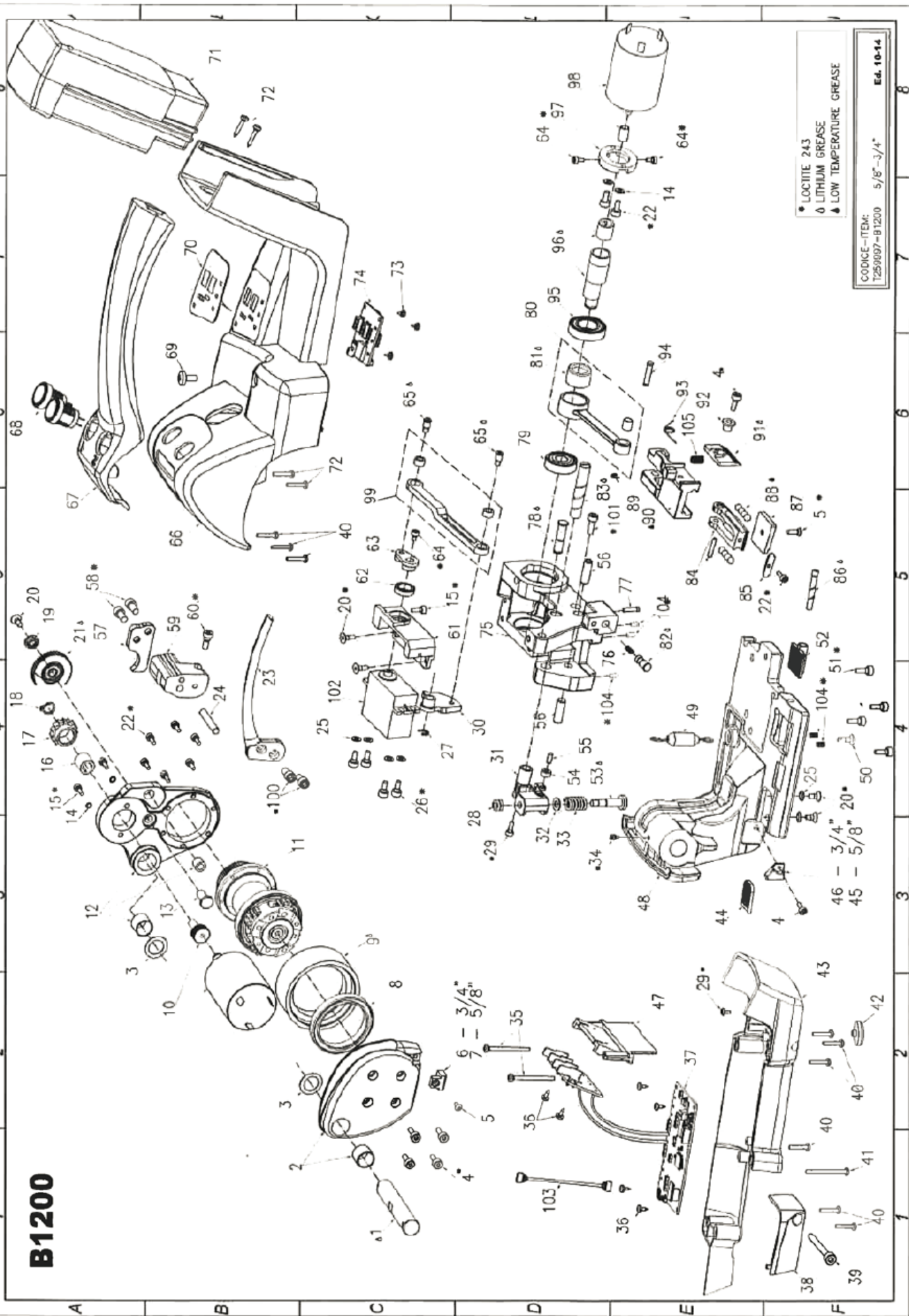
| POLYCHEM PART # | ITEM | DESCRIPTION | QTY | | |
|----------------------------|-------------|--------------------------------------|------------|---|---|
| 190246 | 1 | CENTRAL PIN | 1 | | |
| 190215 | 2 | SUPPORT FEEDWHEEL ASSEMBLED | 1 | | |
| 190050 | 3 | WASHER PS12X18X0.5 DIN988 | 2 | | |
| 190031 | 4 | CYLINDER SCREW M4x10 UNI5931 | 7 | | |
| 190122 | 5 | SPECIAL SCREW WELDING PLATE | 2 | | |
| 190267 | 6 | LATERAL STRAP GUIDE 19mm (3/4") | 1 | | |
| 190237 | 7 | LATERAL STRAP GUIDE 16mm (5/8") | 1 | | |
| 190026 | 8 | BEARING 61808-ZZ C3 | 1 | | |
| 190264 | 9 | FEEDWHEEL | 1 | § | * |
| 190260 | 10 | TENSION MOTOR ASSEMBLED | 1 | | * |
| 190179 | 11 | GEARBOX | 1 | | |
| 190261 | 12 | TENSION MOTOR FLANGE ASSEMBLED | 1 | | |
| 190071 | 13 | GEAR SHAFT | 1 | | |
| 190220 | 14 | SCHNORR WASHER R150 DIAM.3 | 2 | | |
| 190040 | 15 | CYLINDER SCREW M3X10 UNI5931 | 1 | | |
| 190028 | 16 | BEARING INA HF0812 | 1 | | |
| 190074 | 17 | FREEWHEEL SUPPORT | 1 | | |
| 190054 | 18 | CIRCLIP D8 TYPE E DIN 471 | 1 | | |
| 190076 | 19 | WASHER | 1 | | |
| 190043 | 20 | SCREW M4x10 UNI5933 | 6 | | |
| 190077 | 21 | FREE GEAR | 1 | | |
| 190161 | 22 | CYLINDER SCREW M3x8 UNI5931 | 11 | | * |
| 190251 | 23 | OPENING LEVER | 1 | | |
| 190228 | 24 | SPINA CIL. Ø5x30 | 1 | | |
| 190147 | 25 | WASHER | 6 | | |
| 190196 | 26 | CYLINDER SCREW M4x8 UNI5931 | 4 | | |
| 190227 | 27 | CIRCLIP RA4 UNI7434 R150 | 1 | | |
| 190042 | 28 | NUT M6 DIN985 | 1 | | |
| 190219 | 29 | SCREW M4x6 DIN7984 | 2 | | |
| 190239 | 30 | CAM | 1 | | |
| 190236 | 31 | SPRING SUPPORT | 1 | | |
| 190134 | 32 | CUP WASHER CB12.5X6.2X0.7 D.2093 | 1 | | |
| 190057 | 33 | SPRING G13-025 ISO10243 | 1 | | |
| 189698 | 34 | SCREW M5x8 UNI 5925 | 1 | | |
| | 35 | SCREW BOSSARD BN13577 3x30 | 2 | | |
| 190046 | 36 | SCREW 2.9X6.5 UNI 6954 | 6 | | * |
| 190263 | 37 | POWER CARD | 1 | | * |
| 190254 | 38 | BLADE COVER | 1 | | |
| 189621 | 39 | SCREW M4X30 UNI5931 | 1 | | |
| 190047 | 40 | SCREW BOSSARD BN13577 3.5x16 KA35 | 9 | | * |

| POLYCHEM PART # | ITEM | DESCRIPTION | QTY | | |
|--------------------|------|--------------------------------------|-----|---|---|
| 190223 | 41 | SCREW BOSSARD BN13577 3.5x35 KA35 | 1 | | * |
| 190208 | 42 | ANTIWEAR PAD | 1 | § | * |
| 190253 | 43 | BOTTOM PLASTIC TOOL COVER | 1 | | |
| 190073 | 44 | STRAP LOCKER | 1 | | |
| 190072 | 45 | 16mm FRONT STRAP GUIDE | 1 | | |
| 190136 | 46 | FRONT STRAP GUIDE 19mm (3/4") | 1 | | |
| 190256 | 47 | BATTERY CARD PLASTIC FRAME | 1 | | |
| 190245 | 48 | MAIN FRAME | 1 | | |
| 190079 | 49 | OPENING LEVER SPRING | 1 | | |
| 190087 | 50 | PIN | 1 | | |
| 190221 | 51 | CYLINDER SCREW M5x14 UNI5931 | 4 | | * |
| 190123 | 52 | WELDING FOOT | 1 | § | * |
| 190098 | 53 | SPRING PIN | 1 | | |
| 190101 | 54 | ROLLER | 1 | | |
| 190062 | 55 | PIN Ø4x12 | 1 | | |
| 190229 | 56 | PIN 6X20 UNI6364B | 2 | | |
| 190248 | 57 | HOOK | 1 | | |
| 190033 | 58 | SCREW UNC10-24X3/8 | 2 | | |
| 190233 | 59 | LEVER/HOOK SUPPORT | 1 | | |
| 190145 | 60 | SPECIAL SCREW | 1 | | |
| 190240 | 61 | SERVO SUPPORT | 1 | | |
| 190217 | 62 | SERVO BEARING H61700-2Z | 1 | | |
| 190214 | 63 | SERVO LEVER | 1 | | |
| 190224 | 64 | CYLINDER SCREW M3x6 UNI5931 | 3 | | |
| 190242 | 65 | PIN | 2 | | |
| 190252 | 66 | TOP PLASTIC TOOL COVER | 1 | | |
| 190255 | 67 | HANDLE | 1 | | |
| 190230 | 68 | TENSION/WELDING BUTTON | 2 | | * |
| 190225 | 69 | VITE TBEI M5x8 ISO7380 | 1 | | |
| 190205 | 70 | KEYBOARD | 1 | | * |
| B1200BAT | 71 | 3.2Ah Li-Po BATTERY | 1 | § | * |
| 190226 | 72 | SCREW 3x20 DIN7505 A | 4 | | |
| 190045 | 73 | SCREW 2.9X4.5 UNI 6954 | 3 | | * |
| 190204 | 74 | ELECTRONIC SIGNALS CARD | 1 | | * |
| 190265 | 75 | WELDING FRAME | 1 | | |
| 190105 | 76 | STRAP GUIDE SPRING | 1 | | |
| 190209 | 77 | REAR STRAP GUIDE PIN | 1 | | |
| 190238 | 78 | PIN CAM | 1 | | |
| 190029 | 79 | BEARING ERI 61902-2BRS | 1 | | |
| 190212 | 80 | CONNECTING ROD ASSEMBLED | 1 | | |
| 190218 | 81 | ROLL BEARING HK1212 | 1 | | |
| 190243 | 82 | REAR STRAP GUIDE | 1 | | |
| 190235 | 83 | SPRING PIN | 1 | | |

| POLYCHEM PART # | ITEM | DESCRIPTION | QTY | | |
|----------------------------|-------------|---|------------|---|---|
| 190262 | 84 | WELDING FOOT SUPPORT ASSEMBLED | 1 | | |
| 190092 | 85 | COVER | 1 | | |
| 190081 | 86 | WELDING FOOT PIN | 1 | | |
| 190124 | 87 | WELDING PLATE | 1 | § | * |
| 190064 | 88 | SPHERE DIAM. 5mm | 8 | | * |
| 190053 | 89 | CIRCLIP D3.2 | 1 | | |
| 190266 | 90 | SUPPORT | 1 | | |
| 190126 | 91 | CUTTER | 1 | § | * |
| 190091 | 92 | CUTTER GUIDE | 1 | | |
| 190206 | 93 | SPRING | 1 | | |
| 190070 | 94 | CONNECTING ROD PIN | 1 | | |
| 190030 | 95 | BEARING ERI 609-2BRS | 1 | | |
| 190213 | 96 | ECCENTRIC SHAFT ASSEMBLED | 1 | | |
| 190234 | 97 | WELDING MOTOR FLANGE | 1 | | |
| 190202 | 98 | WELDING MOTOR ASSEMBLED | 1 | | * |
| 190216 | 99 | SERVO/CAM CONNECTING LEVER | 1 | | |
| 189600 | 100 | SCREW UNI 10-24x1/8" | 2 | | |
| 190037 | 101 | CYLINDER SCREW M4x12 UNI5931 | 1 | | |
| 190231 | 102 | SERVOMOTOR | 1 | | |
| 190232 | 103 | POWER CARD-KEYBOARD CONNECTION CABLE | 1 | | |
| 190044 | 104 | SCREW M4x5 UNI5923 | 5 | | |
| 190110 | 105 | BLADE SPRING | 1 | | |

| | | |
|--|---|-----------------------------|
| | * | PART THAT SHOULD BE STOCKED |
| | § | WEARING PART |

B1200



* LOCITE 243
 O LITHIUM GREASE
 ▲ LOW TEMPERATURE GREASE

CODICE-ITEM:
 T259997-B1200 5/8"-3/4"
 Ed. 10-14